

Banning Ranch Historical Topography Comparison Tables

1901 to 1935				
Time Range (years)	Points	Contour	Retreat Distance (feet)	Bluff Retreat Rate (feet per year)
34	1	25	135	3.97
34	1	50	15	0.44
34	2	25	163	4.79
34	2	50	83	2.44
34	3	25	251	7.38
34	3	75	184	5.41

Average = 4.07

Range = 0.44 - 7.38

1935 to 1951				
Time Range (years)	Points	Contour	Retreat Distance (feet)	Bluff Retreat Rate (feet per year)
16	1	25	54	3.38
16	1	50	71	4.44
16	2	25	57	3.56
16	2	50	22	1.38
16	3	25	80	5
16	3	75	90	5.63

Average = 3.89

Range = 1.38 - 5.63

1951 to 1965				
Time Range (years)	Points	Contour	Retreat Distance (feet)	Bluff Retreat Rate (feet per year)
14	1	25	18	1.29
14	1	50	11	0.79
14	2	25	8	0.57
14	2	50	8	0.57
14	3	25	0*	0*
14	3	75	0*	0*

Average = 0.53

Range = 0.57 - 1.29

Banning Ranch Historical Topography Comparison Tables

1965 to 2011				
Time Range	Points	Contour	Retreat Distance	Bluff Retreat Rate
46	1	25	0	0
46	1	50	7.33	0.16
46	2	25	23	0.5
46	2	50	20	0.43
46	3	25	67	1.46
46	3	75	63	1.37

Average = 0.65

Range = 0 - 1.46

* Bluff accretion noted likely due to local slumping. Retreat noted as zero and excluded from Bluff Retreat Rate Average.

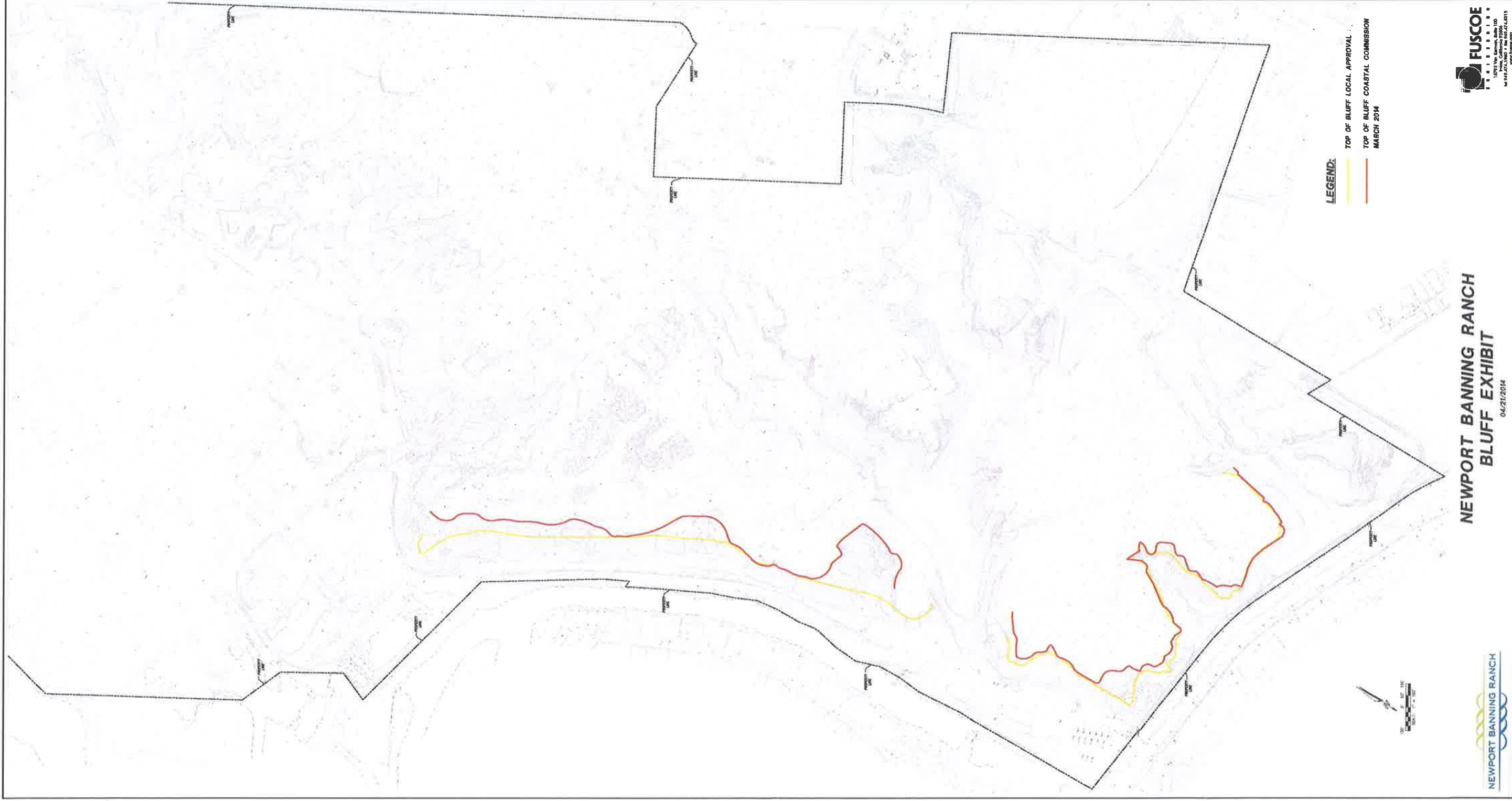


PLATE 1 - BANNING RANCH EXHIBIT

LEGEND

- 1965 CONTOURS
- 2011 CONTOURS
- CURRENT DAY PROPERTY LINES

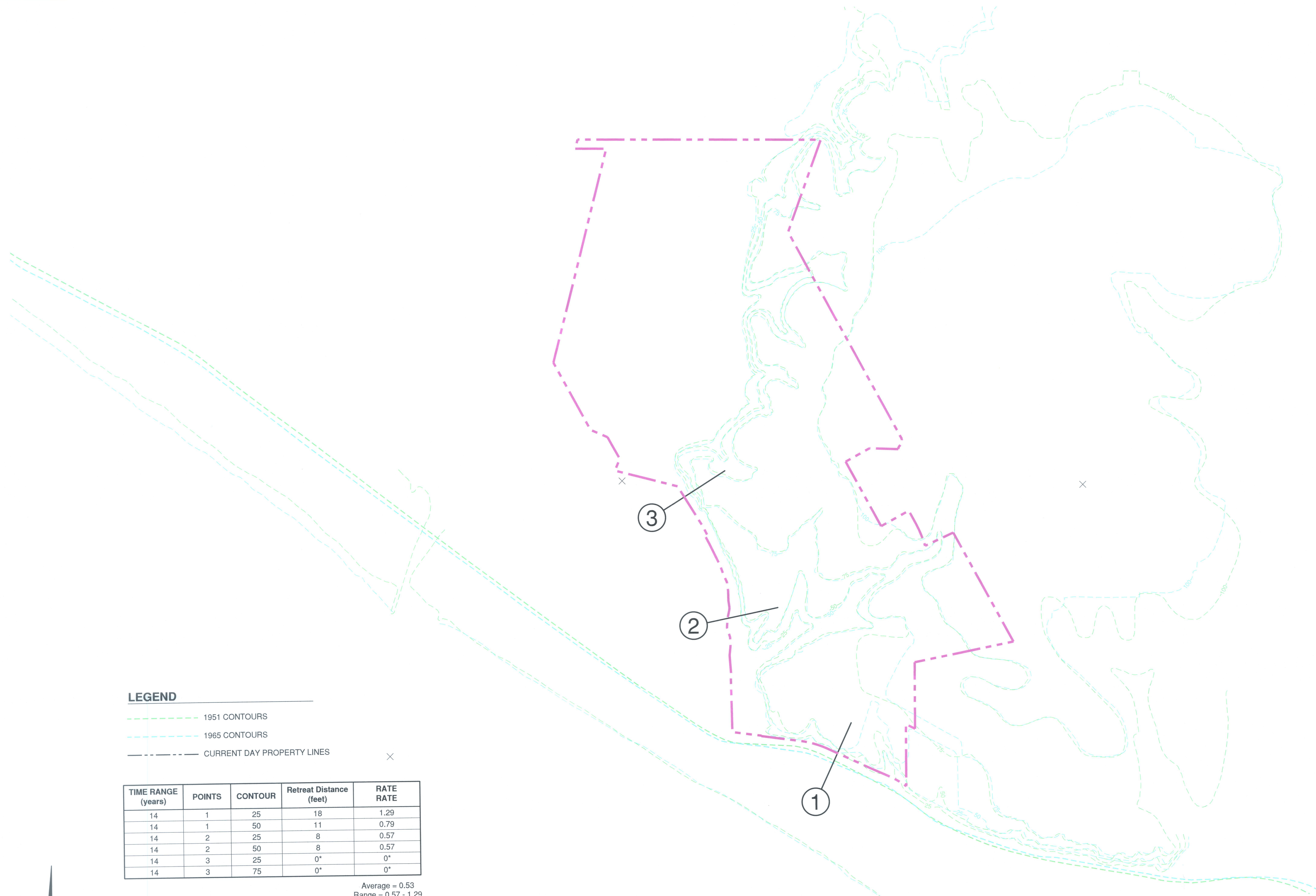
TIME RANGE (years)	POINTS	CONTOUR	Retreat Distance (feet)	RATE RATE
46	1	25	0	0
46	1	50	7.33	0.16
46	2	25	23	0.50
46	2	50	20	0.43
46	3	25	67	1.46
46	3	75	63	1.37

Average = 0.65
Range = 0 - 1.46

* Bluff accretion noted likely due to local slumping.
Retreat noted as zero and excluded from
Bluff Retreat Average.

1965 to 2011 BANNING RANCH HISTORICAL TOPOGRAPHY COMPARISON - FIGURE 18D -

DRAWING: g:\2006\06-16-09\fig 18c_historical topo comparison.dwg PLOTTED: 4/30/2014 4:40 PM BY: Jesus Maza



LEGEND

- 1951 CONTOURS
- 1965 CONTOURS
- CURRENT DAY PROPERTY LINES

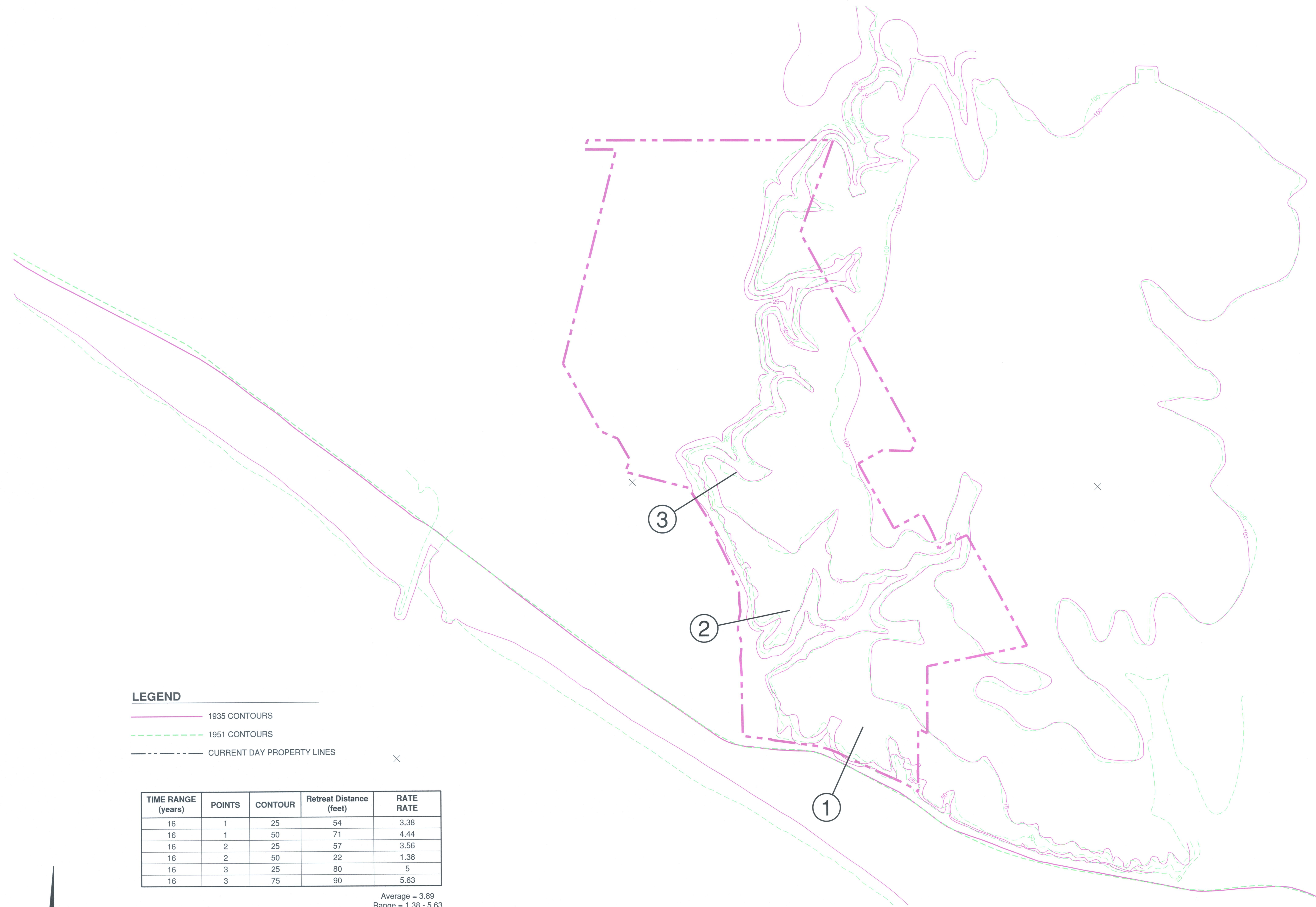
TIME RANGE (years)	POINTS	CONTOUR	Retreat Distance (feet)	RATE RATE
14	1	25	18	1.29
14	1	50	11	0.79
14	2	25	8	0.57
14	2	50	8	0.57
14	3	25	0*	0*
14	3	75	0*	0*

Average = 0.53
Range = 0.57 - 1.29

* Bluff accretion noted likely due to local slumping.
Retreat noted as zero and excluded from
Bluff Retreat Average.

1951 to 1965 BANNING RANCH HISTORICAL TOPOGRAPHY COMPARISON - FIGURE 18C -

DRAWING: g:\2008\06-153-03.dwg\0615309.dwg 18b-historical topo comparison.dwg PLOTTED: 4/20/2014 4:33 PM BY: Jesus Mesa



LEGEND

- 1935 CONTOURS
- 1951 CONTOURS
- CURRENT DAY PROPERTY LINES

TIME RANGE (years)	POINTS	CONTOUR	Retreat Distance (feet)	RATE RATE
16	1	25	54	3.38
16	1	50	71	4.44
16	2	25	57	3.56
16	2	50	22	1.38
16	3	25	80	5
16	3	75	90	5.63

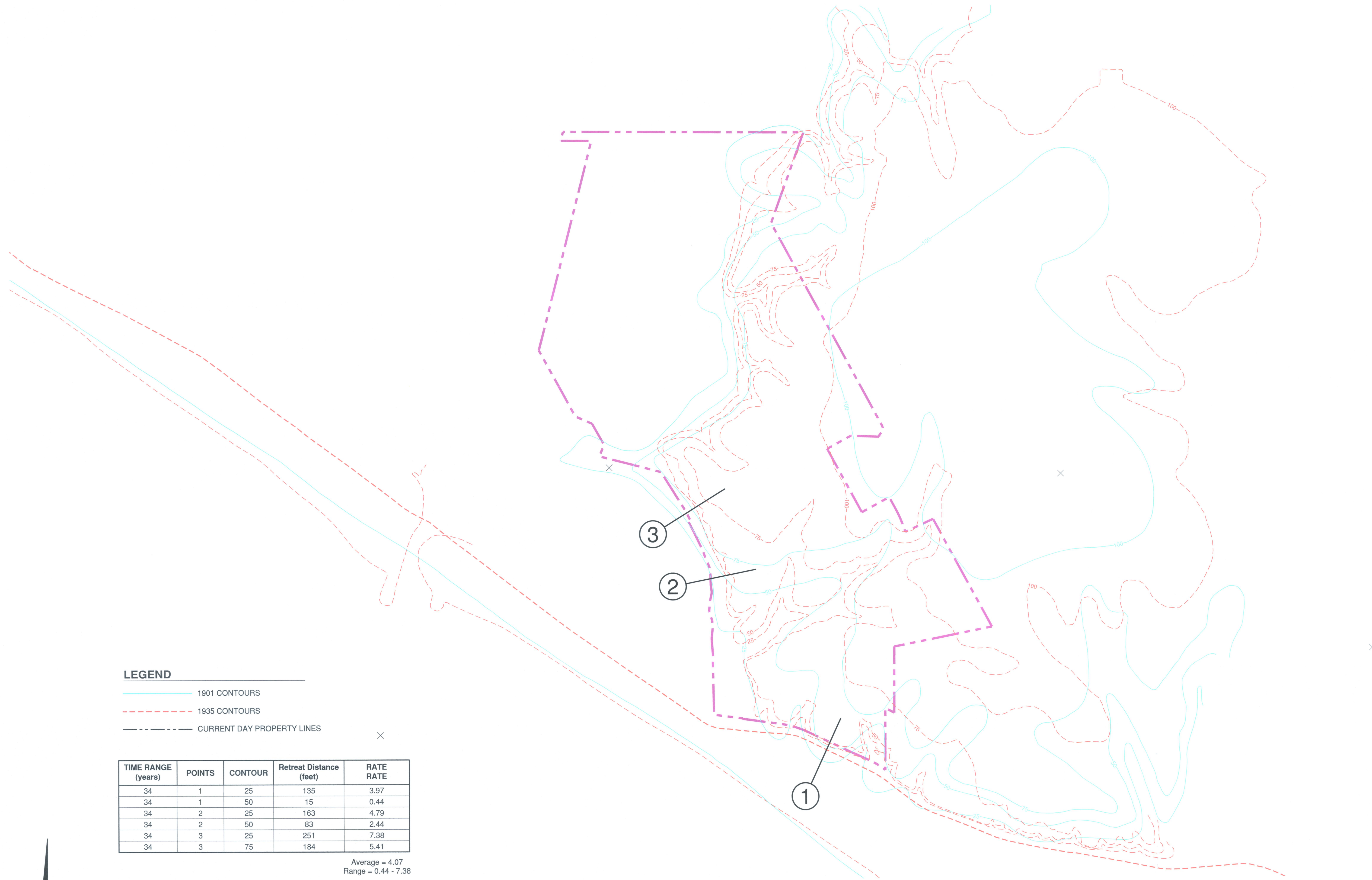
Average = 3.89
Range = 1.38 - 5.63

* Bluff accretion noted likely due to local slumping.
Retreat noted as zero and excluded from
Bluff Retreat Average.

1935 to 1951 BANNING RANCH HISTORICAL TOPOGRAPHY COMPARISON - FIGURE 18B -



DRAWING: q:\2006\06-163-09\dwg\0616309_fig_18a_historical_topo_comparison.dwg PLOTTED: 4/30/2014 4:31 PM BY: Jesus Merz



LEGEND

— 1901 CONTOURS

- - - 1935 CONTOURS

- - - CURRENT DAY PROPERTY LINES

TIME RANGE (years)	POINTS	CONTOUR	Retreat Distance (feet)	RATE RATE
34	1	25	135	3.97
34	1	50	15	0.44
34	2	25	163	4.79
34	2	50	83	2.44
34	3	25	251	7.38
34	3	75	184	5.41

Average = 4.07
Range = 0.44 - 7.38

**1901 to 1935
BANNING RANCH HISTORICAL TOPOGRAPHY COMPARISON
- FIGURE 18A -**

