

Advanced Listing Services Inc

Ownership Listings & Radius Maps
P.O. Box 2593 • Dana Point, CA • 92624
Office: (949) 361-3921 • Fax: (949) 361-3923
www.Advancedlisting.com

I, Denise Kaspar, hereby certify that the attached list contains the names, addresses and assessor's parcel numbers of all persons to whom all property is assessed as they appear on the latest available assessment roll of the County of Orange within the area described by the required 100 foot radius (excluding roads and waterways) measured from the exterior boundaries of the property legally described as:

APN: 424-041-08, 10, 11, 13 & 424-042-03

Subject Address: Situs n/a


Denise Kaspar

December 8, 2011

I hereby certify that to the best of my knowledge the attached occupants list correctly indicates addresses of the required occupants that fall within the radius.

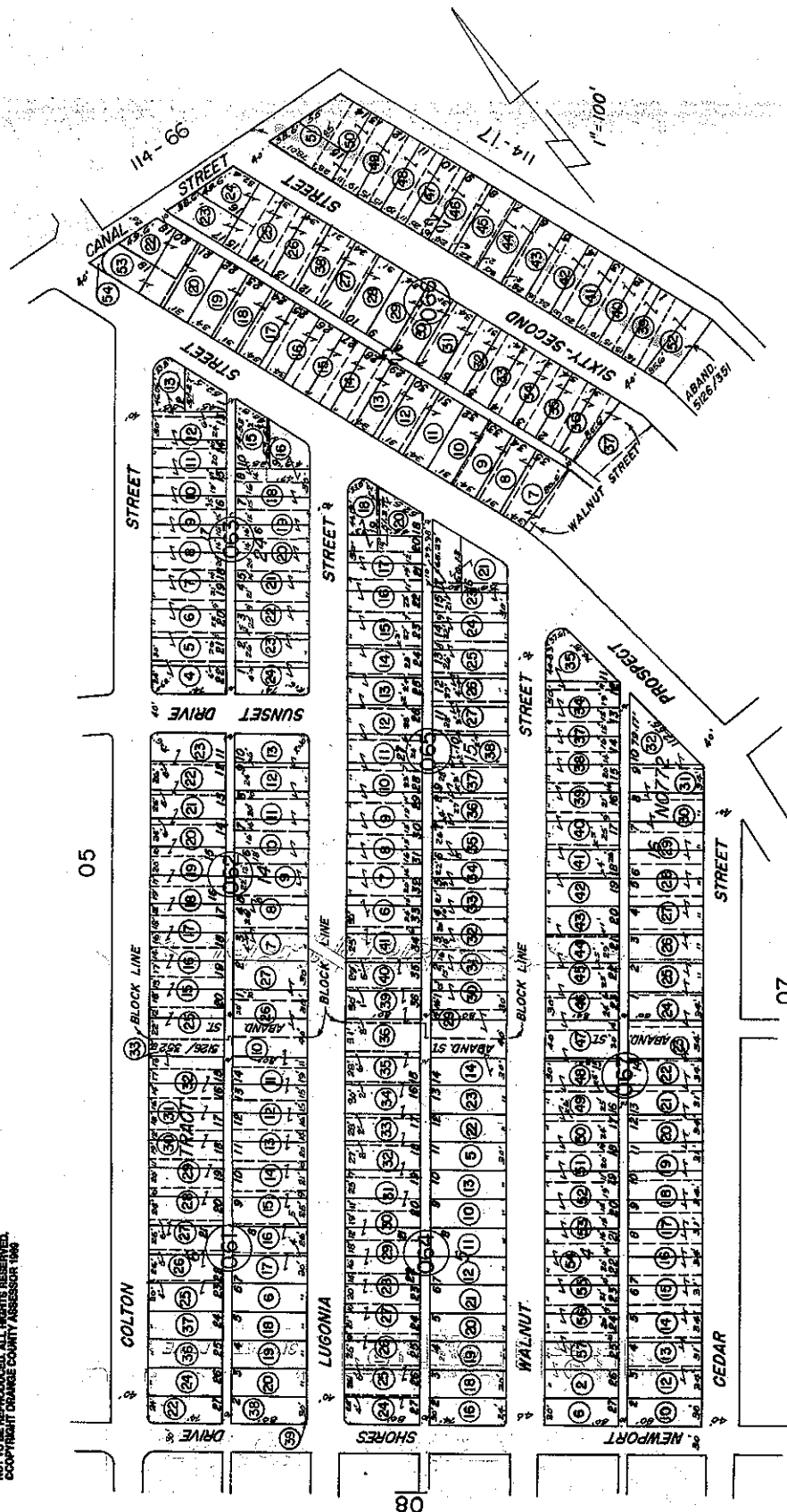

Denise Kaspar

December 8, 2011

45-06

SEE SPECIAL PAGE 45-069 FOR SUBSURFACE FEE TITLE ASSESSMENT

THIS MAP WAS PREPARED FOR ORANGE COUNTY ASSESSOR'S MAPS ONLY. THE ASSESSOR MAKES NO WARRANTY OR LIABILITY FOR OTHER USES. NOT TO BE REPRODUCED. ALL RIGHTS RESERVED. COPYRIGHT ORANGE COUNTY ASSESSOR 1949



MARCH 1949

TR. NO. 772

M.M. 23-5 & 6

NOTE - ASSESSOR'S BLOCK & PARCEL NUMBERS SHOWN IN CIRCLES

ASSESSOR'S MAP BOOK 45 PAGE 06 COUNTY OF ORANGE

045-10

THIS MAP WAS PREPARED FOR ORANGE COUNTY ASSESSOR DEPT. PURPOSES ONLY. THE ASSESSOR MAKES NO GUARANTEE AS TO THE ACCURACY OF THE INFORMATION FOR ANY OTHER USES. ALL RIGHTS RESERVED. © COPYRIGHT ORANGE COUNTY ASSESSOR 2007

PROSPECT

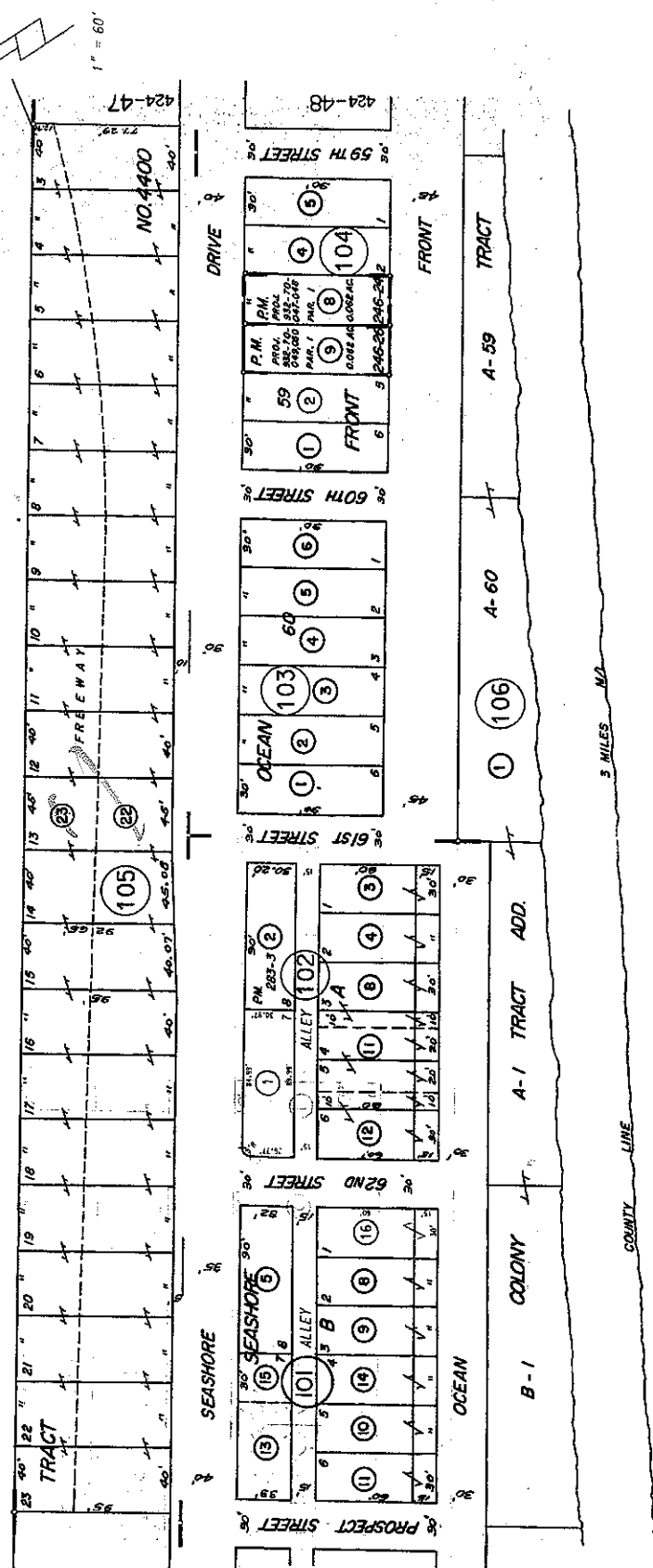
62 ND

61 ST

60 TH

COAST

BOULEVARD



MARCH 1949

SEASHORE COLONY TRACT ADD.
OCEAN FRONT TRACT
TRACT NO. 4400
PARCEL MAP

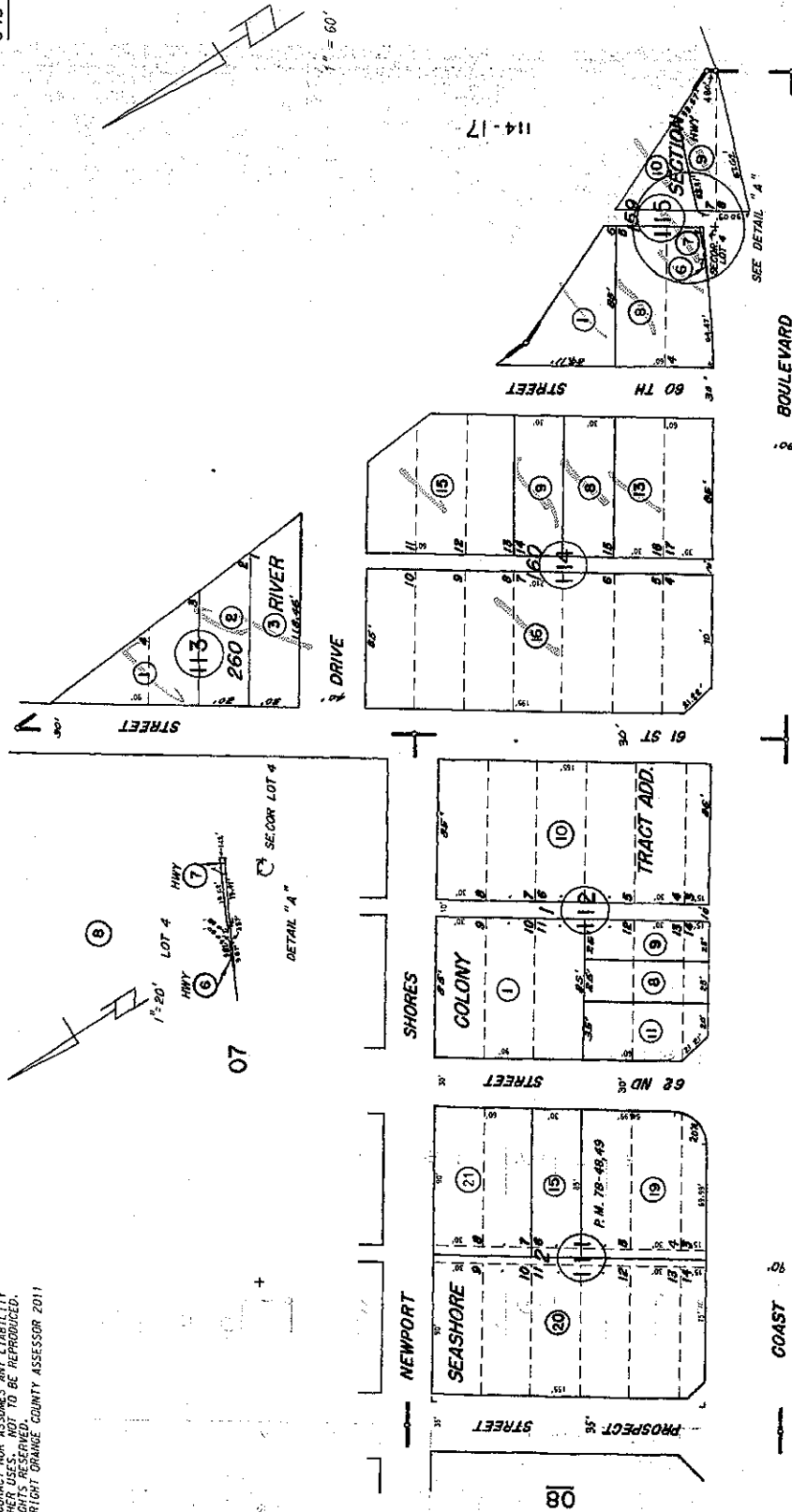
M.M. 7-25
M.M. 4-12
M.M. 162-20 to 26, Inc.
P.M. 246-24, 246-26

NOTE - ASSESSOR'S BLOCK & PARCEL NUMBERS SHOWN IN CIRCLES

ASSESSOR'S MAP BOOK 045, PAGE 10 COUNTY OF ORANGE

045-11

THIS MAP WAS PREPARED FOR ORANGE COUNTY BY THE COUNTY ASSESSOR. THE ASSESSOR MAKES NO GUARANTEE AS TO ITS ACCURACY NOR ASSUMES ANY LIABILITY FOR OTHER USES. NOT TO BE REPRODUCED. © COPYRIGHT ORANGE COUNTY ASSESSOR 2011



MARCH 1949

SEASHORE COLONY TR. ADD.
RIVER SECTION

M.M. 7-25
M.M. 4-25

NOTE - ASSESSOR'S BLOCK &
PARCEL NUMBERS
SHOWN IN CIRCLES

ASSESSOR'S MAP
BOOK 045 PAGE 11
COUNTY OF ORANGE

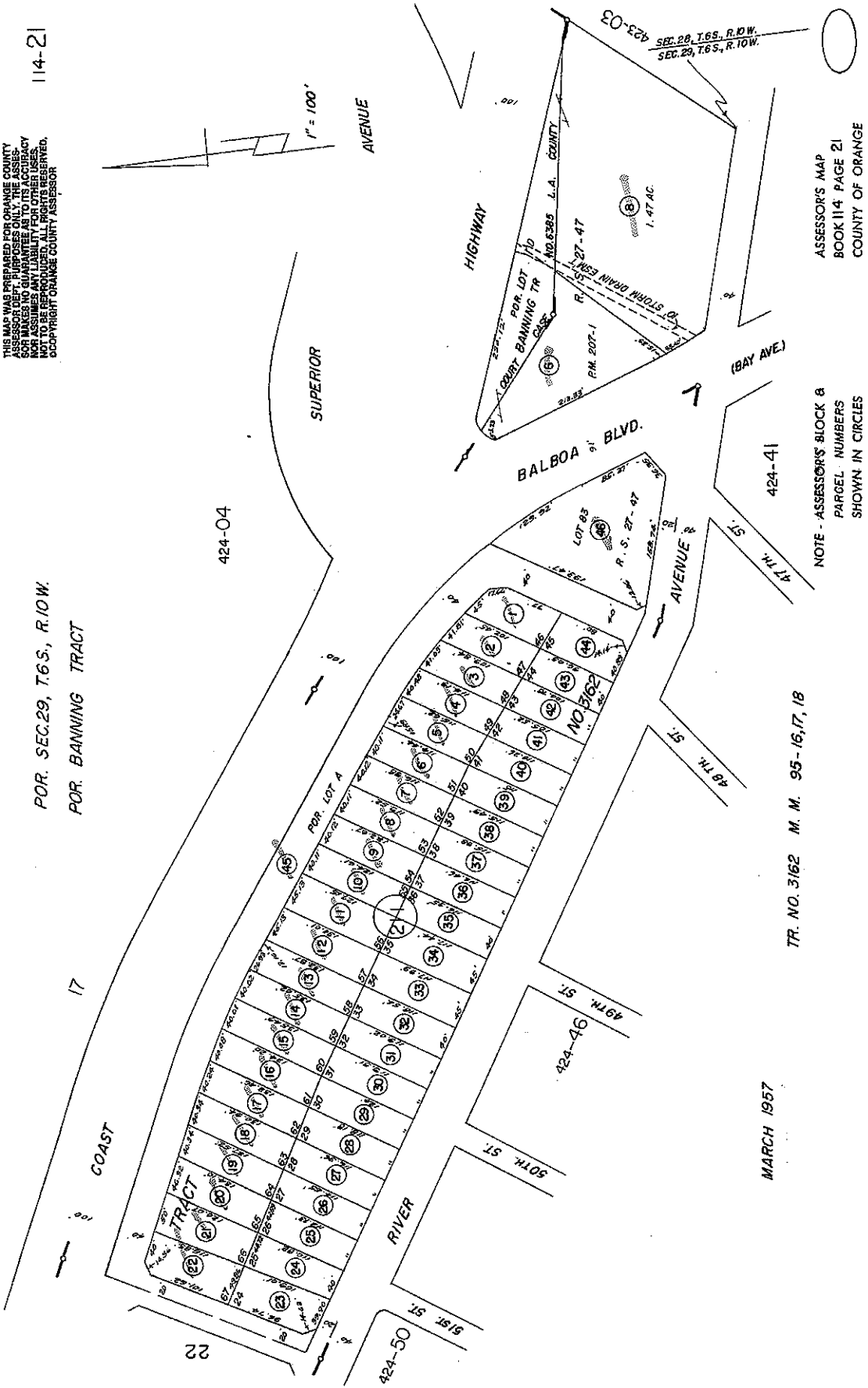
10

114-21

THIS MAP WAS PREPARED FOR ORANGE COUNTY
AND MAKES NO GUARANTEE AS TO ITS ACCURACY
NOR ASSUMES ANY LIABILITY FOR OTHER USES.
NOT TO BE REPRODUCED, ALL RIGHTS RESERVED.
COPYRIGHT ORANGE COUNTY ASSESSOR

FOR SEC. 29, T. 6 S., R. 10 W.
FOR BANNING TRACT

17



ASSESSOR'S MAP
BOOK 114 PAGE 21
COUNTY OF ORANGE

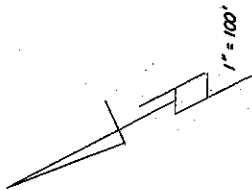
NOTE - ASSESSOR'S BLOCK &
PARCEL NUMBERS
SHOWN IN CIRCLES

TR. NO. 3162 M. M. 95-16, 17, 18

MARCH 1957

114-22

THIS MAP WAS PREPARED FOR ORANGE COUNTY ASSESSOR DEPT. PURPOSES ONLY. THE ASSESSOR MAKES NO GUARANTEE AS TO ITS ACCURACY NOR ASSUMES ANY LIABILITY FOR ANY ERRORS. NOT TO BE REPRODUCED. ALL RIGHTS RESERVED. COPYRIGHT ORANGE COUNTY ASSESSOR

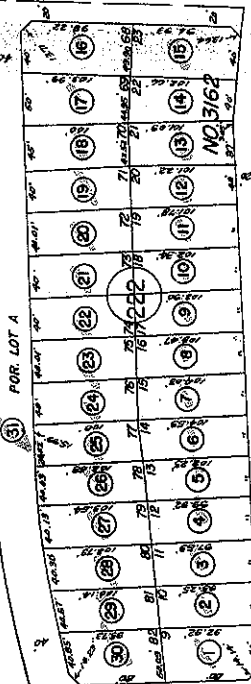


17

HIGHWAY

FOR LOT A

2



AVENUE

52ND ST

53RD ST

424-50

54TH ST

424-47

MARCH 1957

TR. NO. 3162 M. M. 95-16, 17, 18

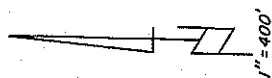
NOTE - ASSESSOR'S BLOCK & PARCEL NUMBERS SHOWN IN CIRCLES

ASSESSOR'S MAP BOOK 114 PAGE 22 COUNTY OF ORANGE

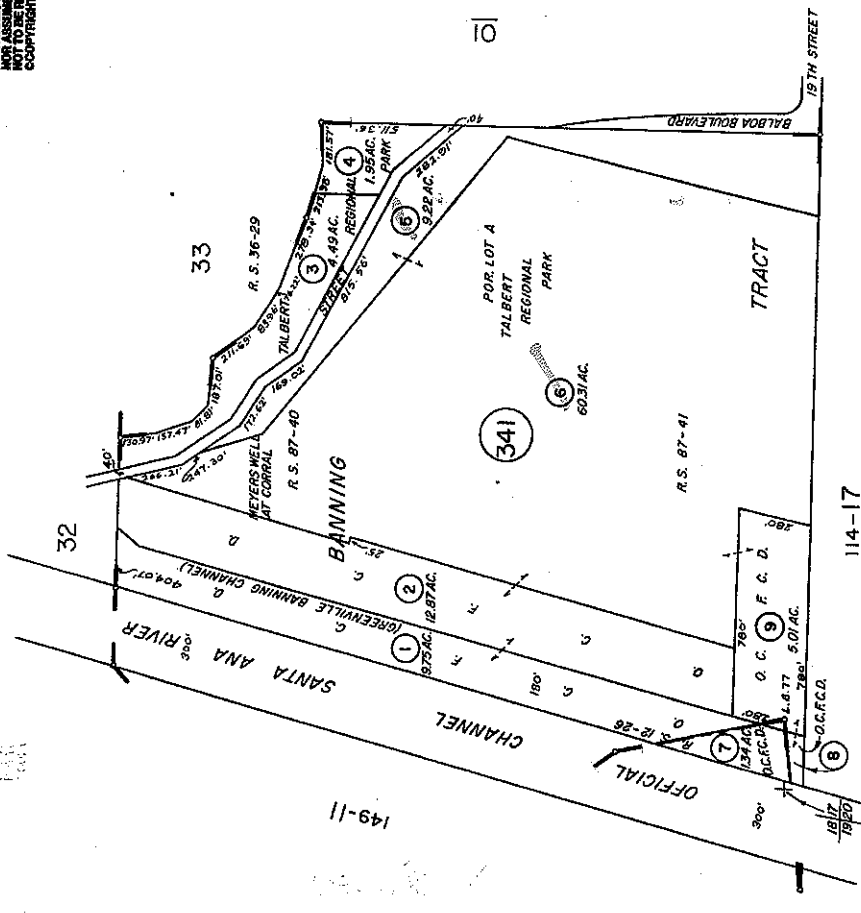


422-34

THIS MAP WAS PREPARED FOR ORANGE COUNTY
ASSASSORS AND IS NOT TO BE USED FOR
ANY OTHER PURPOSES. ALL RIGHTS RESERVED.
COPYRIGHT ORANGE COUNTY ASSASSOR 1982



POR. SEC. 17, T. 6 S., R. 10 W. & POR. SEC. 20, T. 6 S., R. 10 W.



ASSESSOR'S MAP
BOOK 422 PAGE 34
COUNTY OF ORANGE

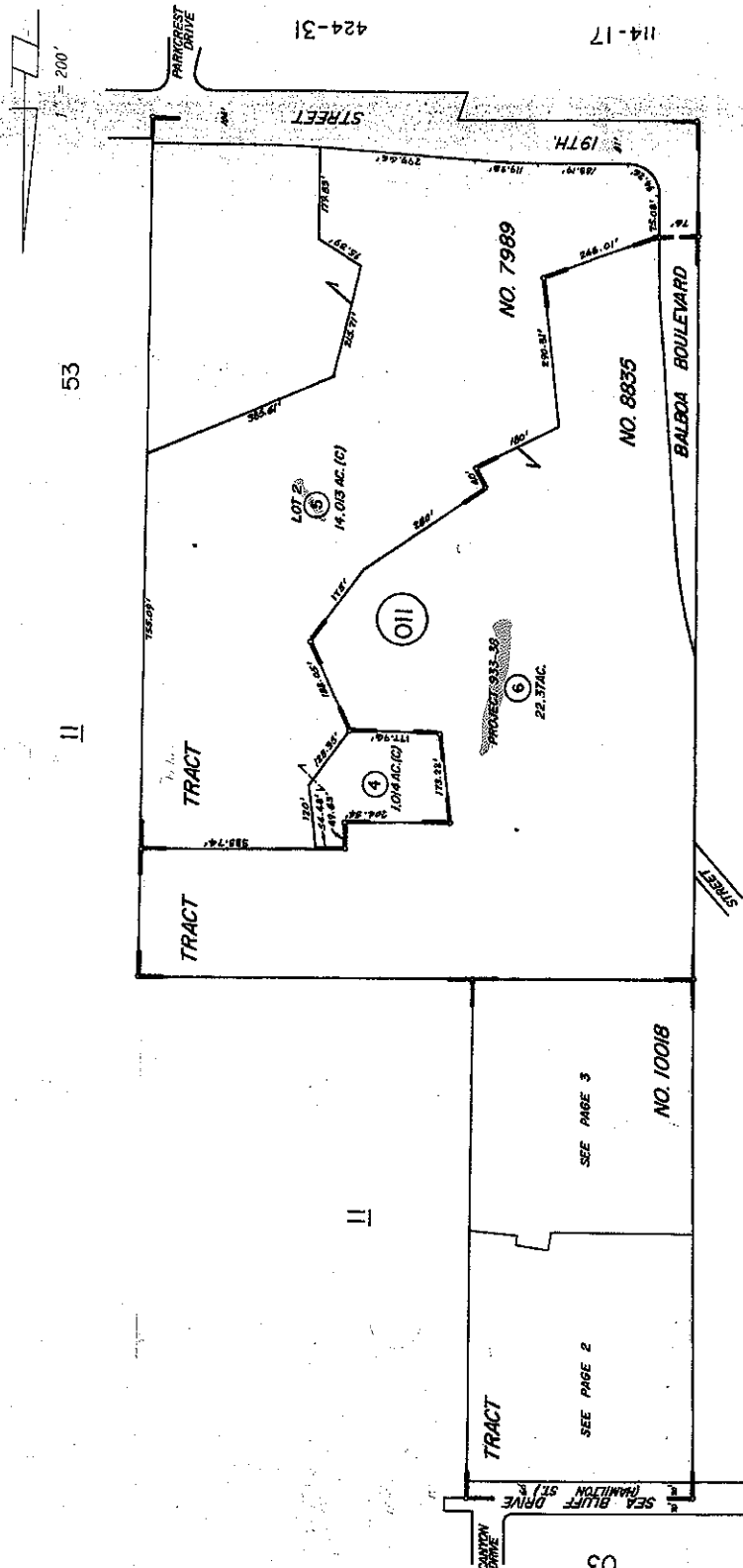
NOTE - ASSESSOR'S BLOCK &
PARCEL NUMBERS
SHOWN IN CIRCLES

MARCH 1983

BANNING TRACT

422-01
PAGE 1 OF 3

THIS MAP WAS PREPARED FOR ORANGE COUNTY AND IS FOR OFFICIAL PURPOSES ONLY. THE ASSESSOR MAKES NO GUARANTEE AS TO ITS ACCURACY NOR ASSUMES ANY LIABILITY FOR OTHER USES. NOT TO BE REPRODUCED. ALL RIGHTS RESERVED.
© COPYRIGHT ORANGE COUNTY ASSESSOR 2005



MARCH 1974

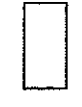
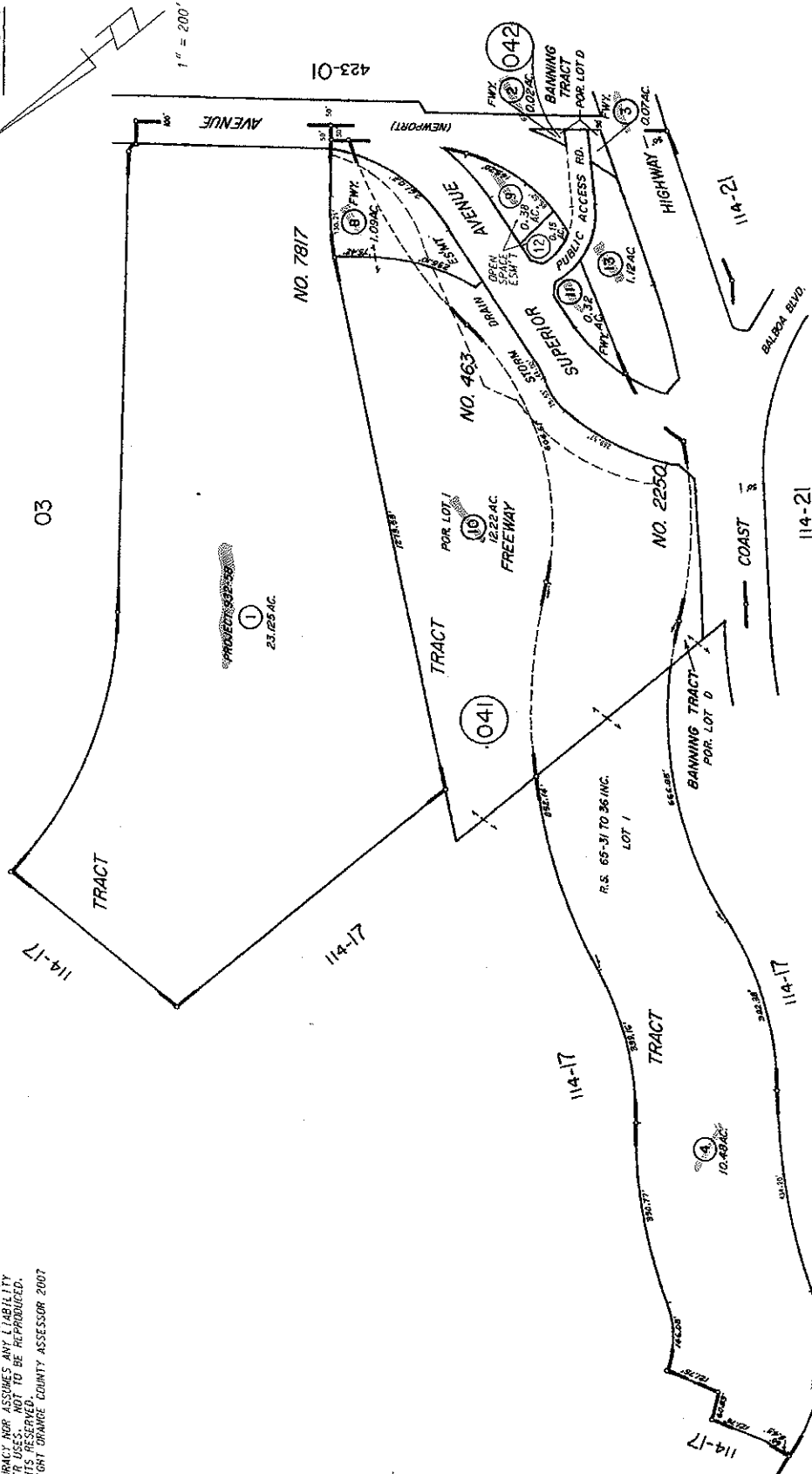
TRACT NO. 7989 M. M. 323 - 11 TO 16 INC.
 TRACT NO. 8835 M. M. 352 - 31 TO 35 INC.
 TRACT NO. 10018 M. M. 425 - 4 TO 7 INC.

NOTE - ASSESSOR'S BLOCK & PARCEL NUMBERS SHOWN IN CIRCLES

ASSESSOR'S MAP BOOK 422 PAGE 01 COUNTY OF ORANGE

SEE SPECIAL PAGE 424-049 FOR FEE TITLE ASSESSMENT BELOW SURFACE

THIS MAP WAS PREPARED FOR ORANGE COUNTY ASSESSOR'S OFFICE BY PARCELQUEST, INC. PARCELQUEST, INC. MAKES NO WARRANTY AS TO ITS ACCURACY NOR ASSUMES ANY LIABILITY FOR OTHER USES. NOT TO BE REPRODUCED. ALL RIGHTS RESERVED.
© COPYRIGHT ORANGE COUNTY ASSESSOR 2007



NOTE - ASSESSOR'S BLOCK & PARCEL NUMBERS SHOWN IN CIRCLES
ASSESSOR'S MAP BOOK 424 PAGE 04 COUNTY OF ORANGE

BANNING TRACT
TRACT NO. 463
TRACT NO. 2250
TRACT NO. 7817
M.M. 32-2
M.M. 104-6, 7
M.M. 308-33, 34

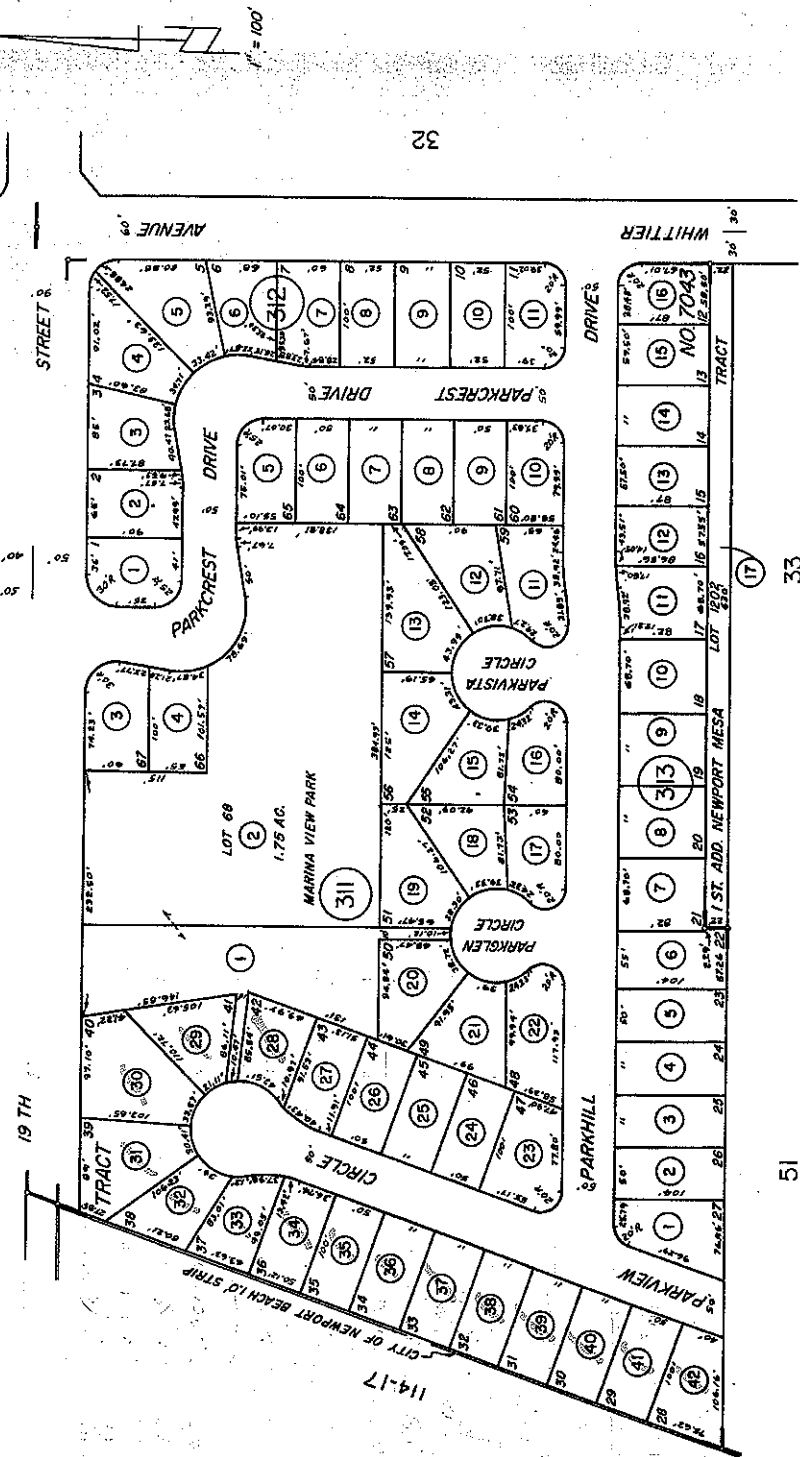
MARCH 1973

424-31

THIS MAP WAS PREPARED FOR ORANGE COUNTY ASSESSOR AND COUNTY ENGINEER BY THE ASSessor AND COUNTY ENGINEER. THE ASSessor HAS CONDUCTED A VISUAL INSPECTION OF THE PROPERTY AND HAS FOUND THAT THE INFORMATION PROVIDED IS ACCURATE. ALL RIGHTS RESERVED. COPYRIGHT ORANGE COUNTY ASSESSOR 1980

422-01

115-50



51

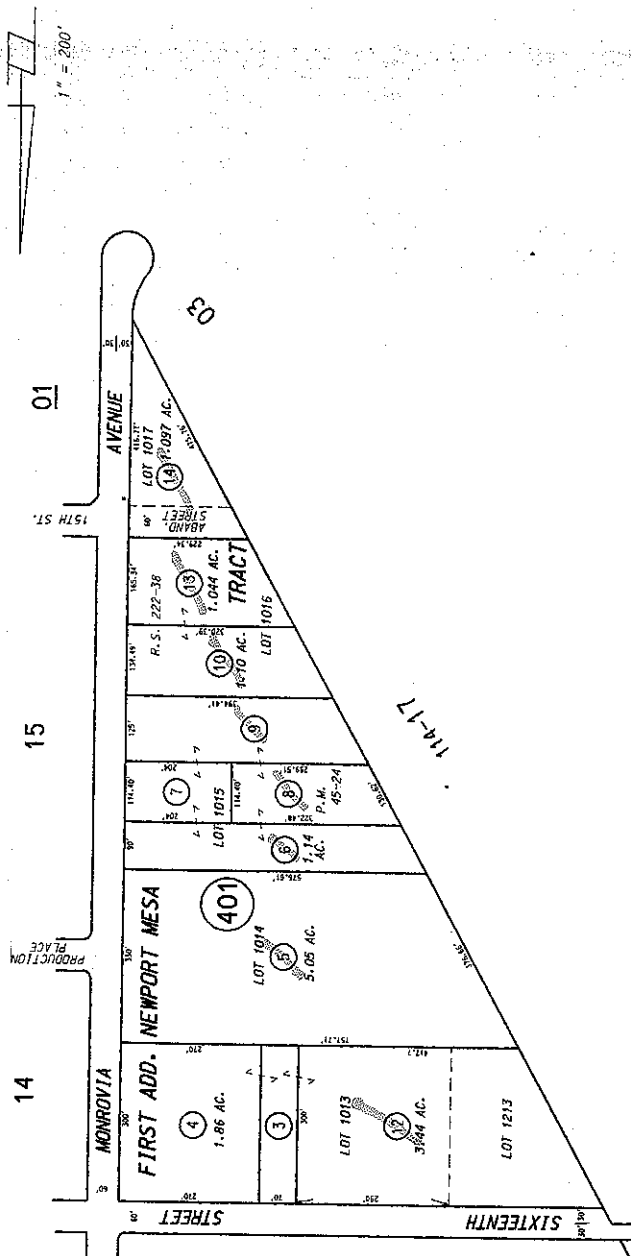
33

MARCH 1980 1 ST. ADD. TO NEWPORT MESA TRACT M.M. 8-61 TRACT NO. 7043 M.M. 272-44, 45, 46

ASSESSOR'S MAP BOOK 424 PAGE 31 COUNTY OF ORANGE

NOTE - ASSESSOR'S BLOCK & PARCEL NUMBERS SHOWN IN CIRCLES

424-40



THIS MAP WAS PREPARED FOR ORANGE COUNTY ASSESSOR DEFY. PURPOSES ONLY. THE ASSESSOR MAKES NO GUARANTEE AS TO CORRECTNESS OR ASSUMES ANY LIABILITY FOR OMISSIONS OR ERRORS. ALL RIGHTS RESERVED. © COPYRIGHT ORANGE COUNTY ASSESSOR 2008

MARCH 1980

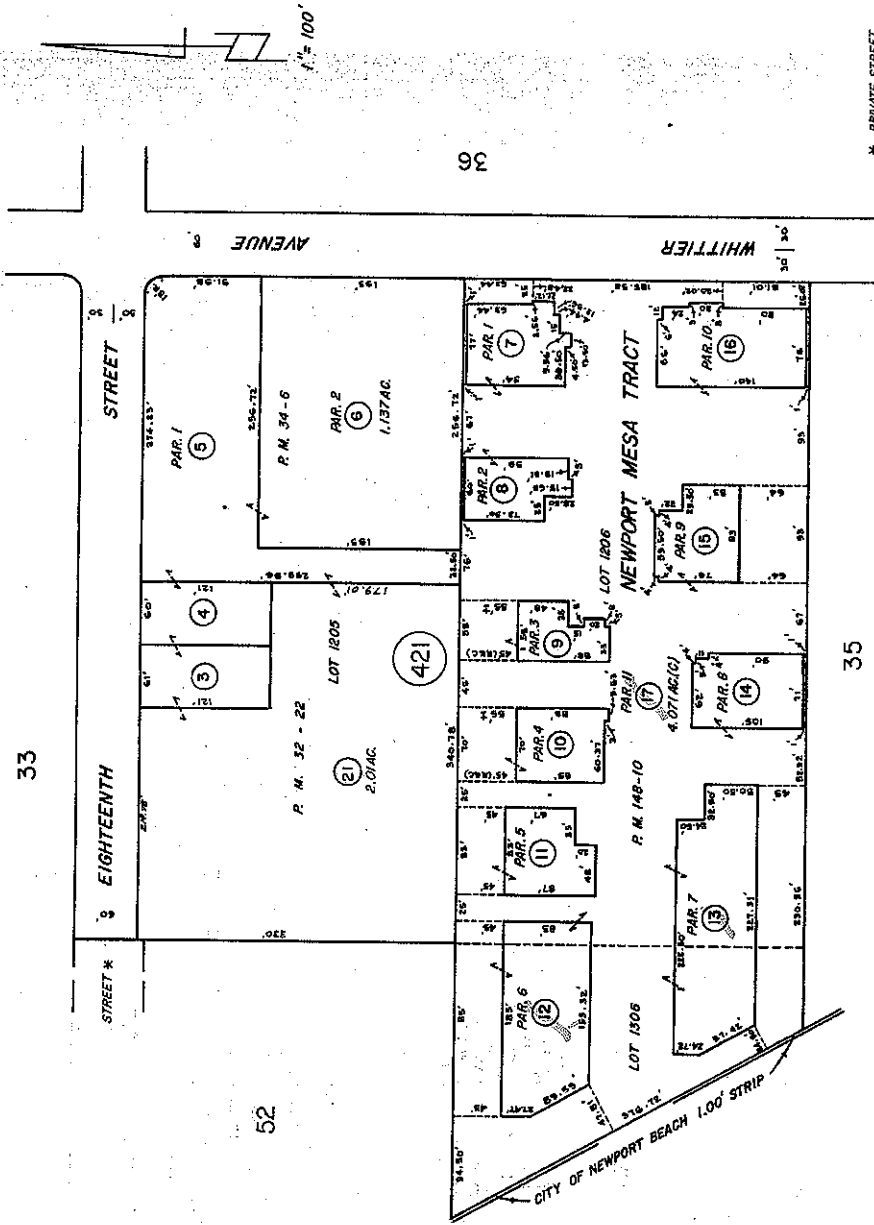
FIRST ADD. NEWPORT MESA TRACT
PARCEL MAP
M.M. 8-61
P.M. 45-24

NOTE - ASSESSOR'S BLOCK & PARCEL NUMBERS SHOWN IN CIRCLES

ASSESSOR'S MAP
BOOK 424 PAGE 40
COUNTY OF ORANGE

THIS MAP WAS PREPARED FOR ORANGE COUNTY ASSESSOR (OSP) AND IS FOR THE ASSESSOR'S USE ONLY. THE ASSESSOR MAKES NO GUARANTEE AS TO THE ACCURACY OF THE INFORMATION SHOWN HEREON. THE ASSESSOR ASSUMES NO LIABILITY FOR OTHER USES OF THIS MAP. ALL RIGHTS RESERVED. COPYRIGHT ORANGE COUNTY ASSESSOR 1988.

424-42



33

STREET *
EIGHTEENTH

52

114-17

36

WHITTIER AVENUE

35

* PRIVATE STREET

MARCH 1981

FIRST ADD. NEWPORT MESA TRACT P.M. 8-61
PARCEL MAP
NEWPORT MESA TRACT P.M. 34-6, 32-22
PARCEL MAP

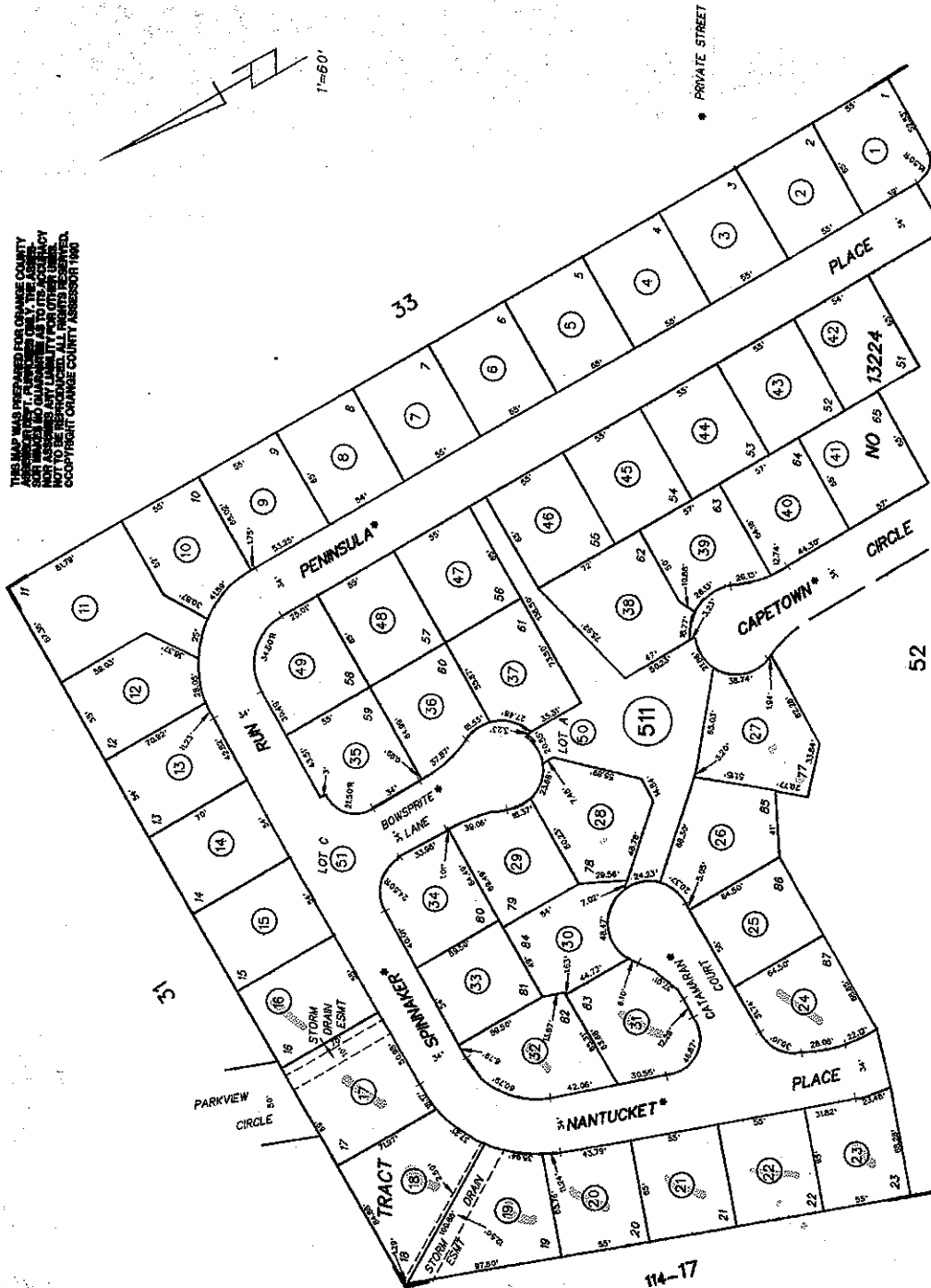
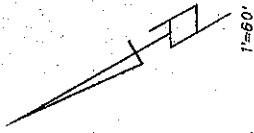
NOTE: ASSESSOR'S BLOCK & PARCEL NUMBERS SHOWN IN CIRCLES

ASSESSOR'S MAP
BOOK 424 PAGE 42
COUNTY OF ORANGE



424 - 51

THIS MAP WAS PREPARED FOR ORANGE COUNTY ASSESSOR'S OFFICE FOR THE PURPOSES OF THE ASSESSMENT OF PARCELS AND IS NOT TO BE REPRODUCED OR TRANSMITTED IN ANY FORM OR BY ANY MEANS, ELECTRONIC OR MECHANICAL, INCLUDING PHOTOCOPYING, RECORDING, OR BY ANY INFORMATION STORAGE AND RETRIEVAL SYSTEM. ALL RIGHTS RESERVED. COPYRIGHT ORANGE COUNTY ASSESSOR 1980



ASSESSOR'S MAP
BOOK 424 PAGE 51
COUNTY OF ORANGE

NOTE -- ASSESSOR'S BLOCK &
PARCEL NUMBERS
SHOWN IN CIRCLES

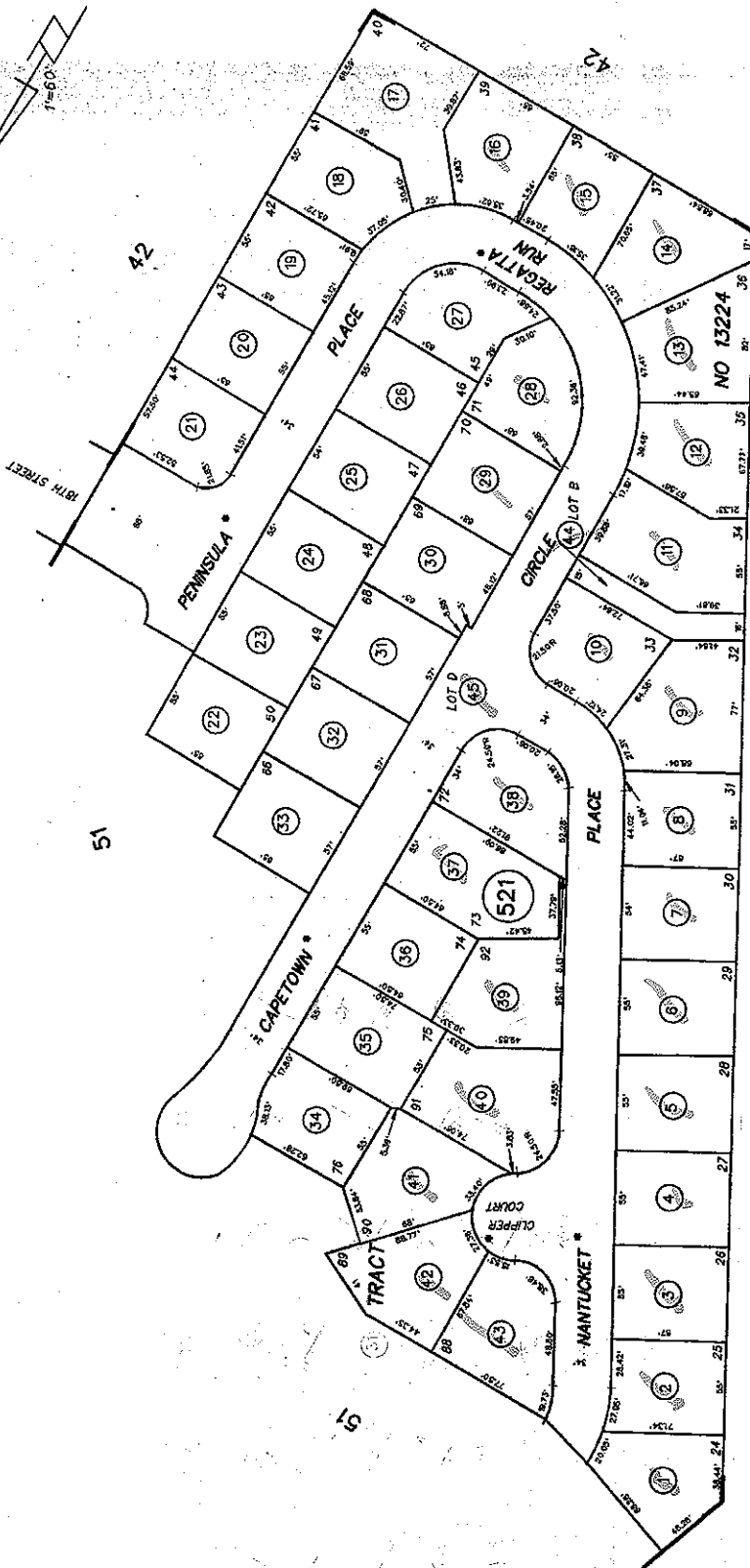
M.M. 636 - 8 TO 12 INC

TRACT NO. 13224

MARCH 1980

424 - 52

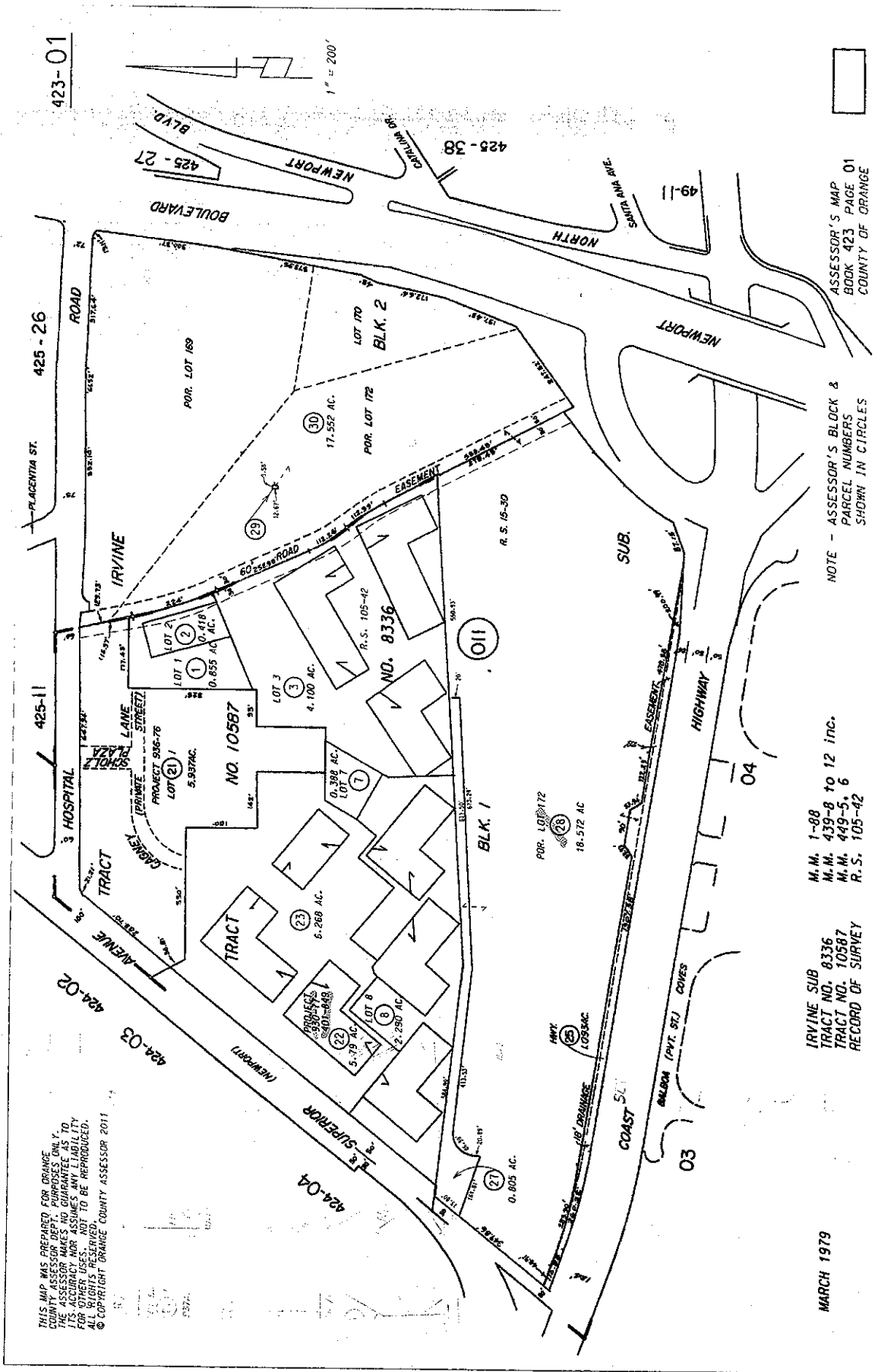
THIS MAP WAS PREPARED FOR ORANGE COUNTY
FOR TRACKING CHANGES ONLY. THE ASSESSOR
DOES NOT WARRANT THE ACCURACY OF THE
INFORMATION OR LIABILITY FOR OTHER USES.
COPYRIGHT ORANGE COUNTY ASSESSOR 1990



* PRIVATE STREET

114-17

MARCH 1990 TRACT NO. 13224 M.M. 636 - 8 TO 12 INC NOTE - ASSESSOR'S BLOCK & PARCEL NUMBERS SHOWN IN CIRCLES ASSESSOR'S MAP BOOK 424 PAGE 52 COUNTY OF ORANGE



THIS MAP WAS PREPARED FOR ORANGE COUNTY ASSESSOR'S DEPT. PURPOSES ONLY. THE ASSessor'S DEPT. ACCEPTS NO LIABILITY FOR ITS ACCURACY NOR ASSUMES ANY LIABILITY FOR OTHER USES. NOT TO BE REPRODUCED. ALL RIGHTS RESERVED.
 © COPYRIGHT ORANGE COUNTY ASSESSOR 2011

IRVINE SUB
 TRACT NO. 8336
 TRACT NO. 10587
 RECORD OF SURVEY

M.M. 1-88
 M.M. 439-8 to 12 inc.
 M.M. 449-5, 6
 R.S. 105-42

MARCH 1979

ASSESSOR'S MAP
 BOOK 423 PAGE 01
 COUNTY OF ORANGE

NOTE - ASSESSOR'S BLOCK &
 PARCEL NUMBERS
 SHOWN IN CIRCLES